

**CATALOGUE**  
**A-2025**

Europlus Textile & Systems s.r.l.

Via Leopoldo Penagini, 7/B-26838 Tavazzano con Villavesco ( LO ) -Italy

T: +39 0371 1920447

Info@europlussrl.com

www.EuroPlusSrl.com





Alla Europlus ci concentriamo su Prodotti di Qualità  
Lavorando Duramente per Garantirti  
Non solo un bell' Ambiente ma strumenti facili da  
installare ed efficienti

At Europlus we focus on Quality Products  
Working Hard to Secure You  
Not just a beautiful environment  
but easy to install and efficient tools



La Nuova Linea Motori Europlus per Tendaggi,  
Tapparelle e Tende da Sole  
New Europlus Motor Line for Curtains,  
Shutters and Awnings



**INDICE**  
**INDEX**



**Motori Tubolari - Tabella Dimensionamento**  
Tubular Motor - Torque/Weight

01-02



**Motori Tubolari - Diametro 25mm**  
Tubular Motor - Diameter 25mm

03-04



**Motori Tubolari - Diametro 35mm**  
Tubular Motor - Diameter 35mm

05-14



**Motori Tubolari - Diametro 45mm**  
Tubular Motor - Diameter 45mm

15-28



**Comandi per Motori Tubolari**  
Tubular Motor Control System

29-34



**Accessori per Motori Tubolari**  
Tubular Motor Accessories

35-36



**Motori per tende arricciate**  
Motor for drapery curtain

37-44



# Motori Tubolari

## Tubular Motor



**AC Motori Tubolari**

AC Tubular Motor

**DC Motori Tubolari**

DC Tubular Motor

**AC Motori Tubolari**

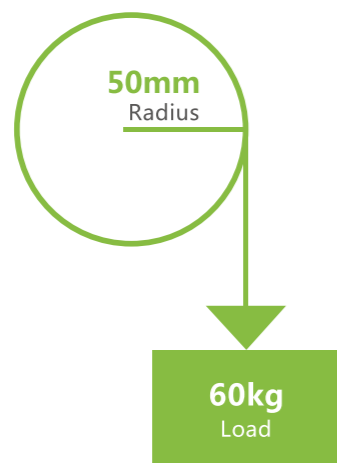
AC Tubular Motors

**DC Motori Tubolari**

DC Tubular Motors

# Motori tubolari-Tabella Dimensionamento

## Tubular motor - Torque/Weight



? N.m

$$\text{Torque(N.m)} = \text{Radius(mm)} \times \text{Load(kg)} \div 100$$

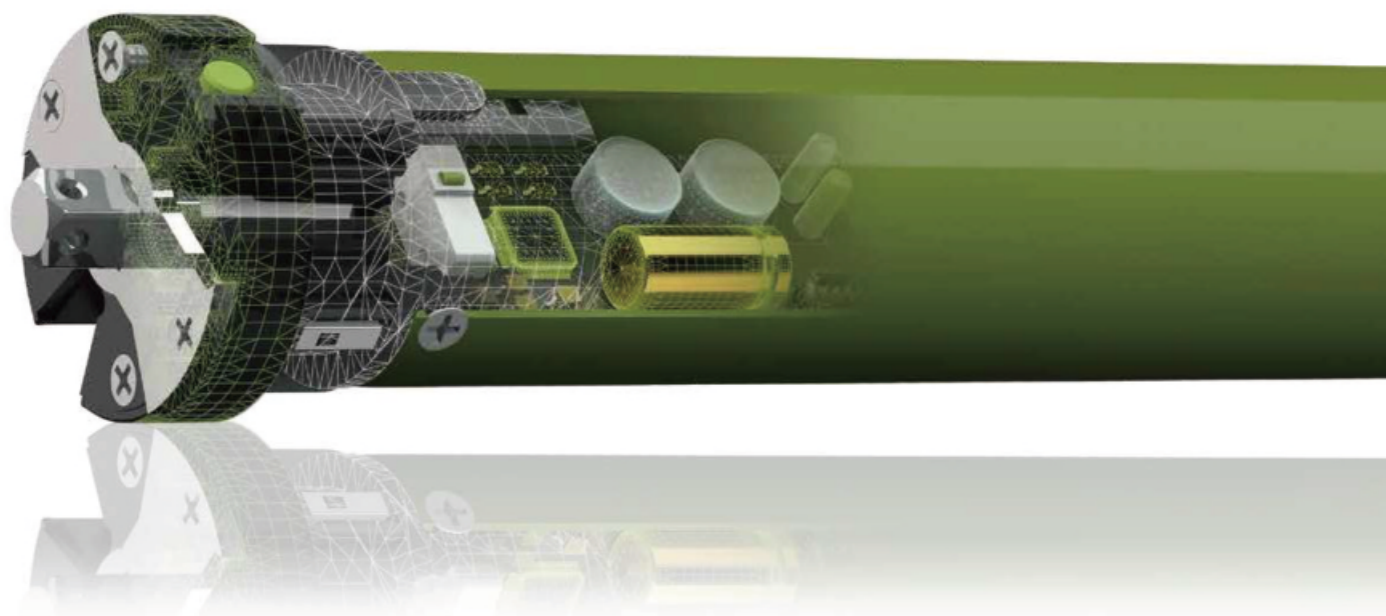
$$= 50(\text{mm}) \times 60(\text{kg}) \div 100 = 30(\text{N.m})$$

? kg

$$\text{Load(Kg)} = \text{Torque(N.m)} \times 100 \div \text{Radius(mm)}$$

$$= 30(\text{N.m}) \times 100 \div 50(\text{mm}) = 60(\text{kg})$$

Remark: Calculation in diagram base on the Newton's Law  
(1 inch=25.4mm 1 pound=0.454Kg)



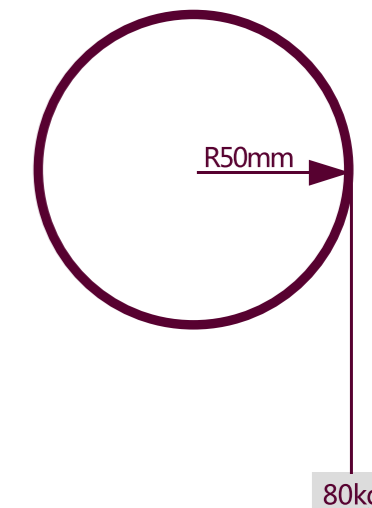
- Tabella di carico teorico N.m
- Theoretical calculations N.m

? N.m

$$\text{Torque ( N.m )} = \text{Radius} \times \text{Load} \div 100$$

$$? \text{ N.m} = 50\text{mm} \times 80\text{kg} \div 100 = 40\text{N.m}$$

Note: Calculation in diagram base on the newton slaw



	Motor torque ( N.m)																		
	0.2	0.7	1.1	3	6	10	20	30	40	50	60	80	100	120	140	180	230	300	350
	Load ( kg )																		
φ20	2	7	11	/	/	/	/	/	/	/	/	/	/	/	/	/	/	/	/
φ28	1.4	5	7.8	/	/	/	/	/	/	/	/	/	/	/	/	/	/	/	/
φ38	1	3.6	5.7	/	/	/	/	/	/	/	/	/	/	/	/	/	/	/	/
φ40	/	/	/	15	30	50	/	/	/	/	/	/	/	/	/	/	/	/	/
φ47	/	/	/	12.5	25	42	/	/	/	/	/	/	/	/	/	/	/	/	/
φ50	/	/	/	12	24	40	80	120	160	200	240	/	/	/	/	/	/	/	/
φ55	/	/	/	11	22	36	72	108	144	180	216	/	/	/	/	/	/	/	/
φ63	/	/	/	9.5	19	31	63	94	126	157	189	/	/	/	/	/	/	/	/
φ70	/	/	/	8.5	17	28	57	85	114	142	171	228	285	342	400	/	/	/	/
φ80	/	/	/	/	/	/	50	75	100	125	150	200	250	300	350	/	/	/	/
φ90	/	/	/	/	/	/	44	66	88	110	132	176	222	266	311	/	/	/	/
φ100	/	/	/	/	/	/	40	60	80	100	120	160	200	240	280	360	460	600	700
φ110	/	/	/	/	/	/	36	54	72	90	108	144	181	218	254	327	418	545	636
φ120	/	/	/	/	/	/	33	49	66	82	99	132	166	208	232	300	383	500	583
φ130	/	/	/	/	/	/	30	45	60	75	90	120	153	184	214	276	353	461	538
φ140	/	/	/	/	/	/	28	42	56	70	84	112	142	171	200	259	328	428	500
φ150	/	/	/	/	/	/	26	40	53	66	80	104	133	160	185	240	306	400	466
φ160	/	/	/	/	/	/	/	/	/	/	75	100	125	150	174	225	287	375	437
φ170	/	/	/	/	/	/	/	/	/	/	70	94	117	141	163	211	270	352	411
φ180	/	/	/	/	/	/	/	/	/	/	66	88	111	133	154	200	255	333	388
φ190	/	/	/	/	/	/	/	/	/	/	/	/	/	/	/	189	242	315	368
φ200	/	/	/	/	/	/	/	/	/	/	/	/	/	/	/	180	230	300	350

Nota: la figura serve solo come riferimento degli utenti finali e la forza di sollevamento effettiva deve considerare la detrazione di un coefficiente d'attrito dal 30% al 35%.  
Note: the figure only serves for the reference of end users and actual lifting force shall consider the deduction of 30% to 35% friction coefficient.

# 25MM-GMLE

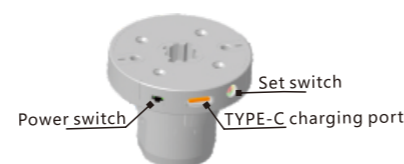
DC tubular Motor  
Built-in Lithium battery



## Outline



## Limit head display



## Caratteristiche/Features

**Motore tubolare diam. 25 mm fine corsa elettronico comando radio con 3° fine corsa e batteria integrata**

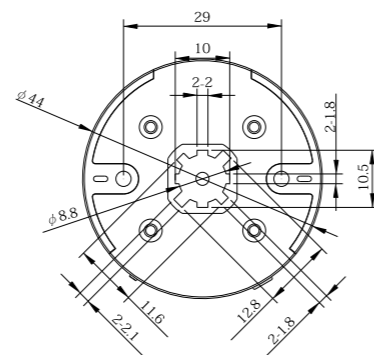
DC motor + Electronic limit + Built-in receiver, Frequency 433.92MHz + Built-in lithium battery + Low power standby + Dot-move&light-adjust + TYPE C + The Third limit

## Telecomando/Remote Control



301-GMGC6018

## Tipo di Testata/Limit Head Dimension



## Caricatore/Charger



25MM-GMUSBC



25MM-GMPLUG

Input : 100-240V/60Hz-50Hz 0.6A  
Output : 5.0V---2.0A 10.0W

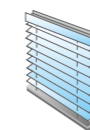
## Accessori/Accessories

Diametro Tubo	Corona	Adattatore	Codice Articolo
Tube size	Crown	Adaptor	Item Code
φ 38			25MM-GMAC38
φ 43			25MM-GMAC43

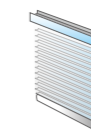
## Utilizzo/Use



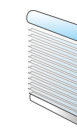
Tende a rullo motorizzate  
Motorized roller blinds



Tende plisset motorizzate  
Motorized pleated blinds



Tende Muslin motorizzate  
Motorized Muslin Blinds



Tende Shangri-La motorizzate  
Motorized Shangri-La Blinds

## Parametri Tecnici/Technical Parameters

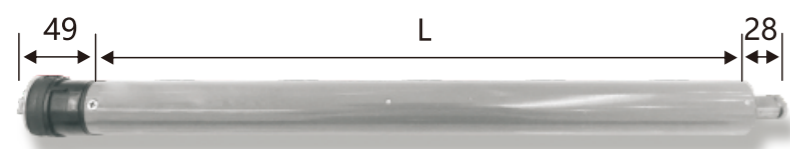
Codice prodotto	Product code	25MM-GMLE2
Parametri tecnici (N.m)	Technical parameters (N.m)	2
Velocità (rpm)	Speed (rpm)	25
Diametro	Motor tube diameter (mm)	25
Classifica di protezione	Protection rating (IP)	IP44
Batteria	Built-in battery	✓
Capacità batteria (mAh)	Battery capacity(mAh)	2600
Frequenza voltaggio (V)	Voltage-Frequency (V)	12
Assorbimento (A)	Absortion (A)	1.4
Consumo (W)	Consumption (W)	16.8
Rumorosità (dB)	Running noise (dB)	42
Peso Motore (kg)	Motor Weight (Kg)	0.41
Lunghezza Tubo (mm)	Tube length (M)	460
Certificazione	Certification	CCC CE

# 35MM-GMS

AC tubular Motor



## Outline

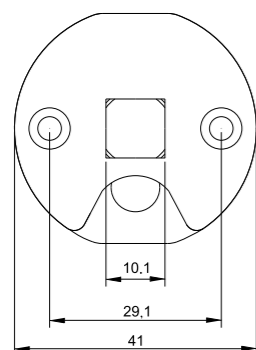


## Caratteristiche/Features

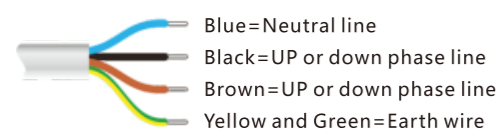
**Motore tubolare diam. 35 mm fine corsa meccanico**

Mechanical limit switch

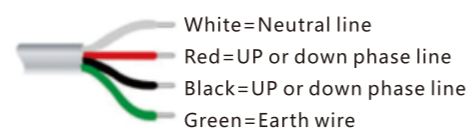
## Tipo di Testata/Limit Head Dimension



## Connessione Elettrica/Wire Connection



230V/50Hz



120V/60Hz

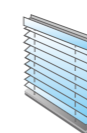
## Accessori/Accessories

Diametro Tubo	Corona	Adattatore	Codice Articolo
Tube size	Crown	Adaptor	Item Code
φ43			35MM-GMAC43
φ61			35MM-GMAC61

## Utilizzo/Use



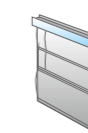
**Tende a rullo motorizzate**  
Motorized roller blinds



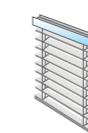
**Tende plissettate motorizzate**  
Motorized pleated blinds



**Tapparelle motorizzate**  
Motorized roller shutters



**Tende a pacchetto motorizzate**  
Motorized roman blinds



**Veneziane in legno motorizzate**  
Motorized wooden venetian blinds



**Schermo proiezione motorizzato**  
Motorized projection screen



**Persiane a rullo antivento motorizzate**  
Motorized windproof roller shutter

## Parametri Tecnici/Technical Parameters

<b>Codice prodotto</b>	Product code	35MM-GMS6
<b>Parametri tecnici (N.m)</b>	Technical parameters (N.m)	6
<b>Velocità (rpm)</b>	Speed (rpm)	28
<b>Diametro</b>	Motor tube diameter (mm)	35
<b>Distanza tra limiti</b>	Limit switch capacity (Turns)	38
<b>Classifica di protezione</b>	Protection rating (IP)	IP44
<b>Voltaggio (V~Hz)</b>	Voltage-Frequency (V~Hz)	230
<b>Assorbimento (A)</b>	Absortion (A)	0.64
<b>Consumo (W)</b>	Consumption (W)	146
<b>Lunghezza Cavo (mt)</b>	Cable length (M)	2.0
<b>Peso Motore (kg)</b>	Motor Weight (Kg)	1.4
<b>Lunghezza Tubo (mm)</b>	Tube length (M)	420
<b>Quantità per Confezione (pz)</b>	Package quantity (pcs)	10
<b>Certificazione</b>	Certification	

# 35MM-GME

AC tubular Motor



## Outline



## Caratteristiche/Features

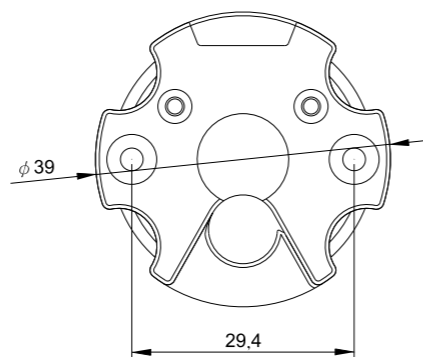
**Motore tubolare diam. 35 mm fine corsa elettronico comando radio con 3° fine corsa**  
 Eletronic Limit + Built-in receiver, Frequency 433.92MHz + Dot-move&light-adjust function + Third Limit

## Telecomando/Remote Control

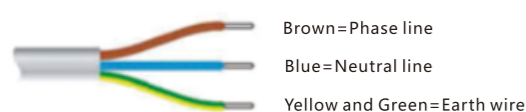


301-GMGC6018

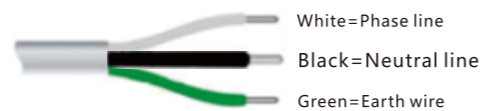
## Tipo di Testata/Limit Head Dimension



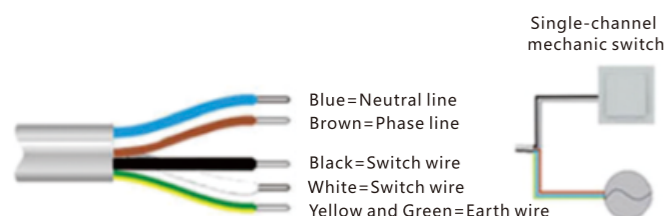
## Connessione Elettrica/Wire Connection



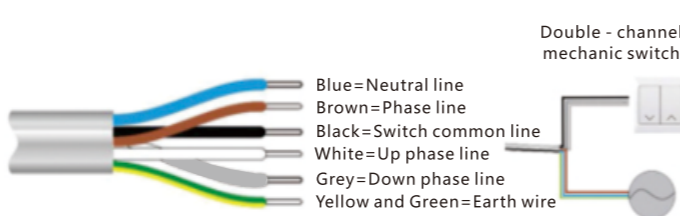
230V/50Hz



120V/60Hz



230V/50Hz EC type five-core wire

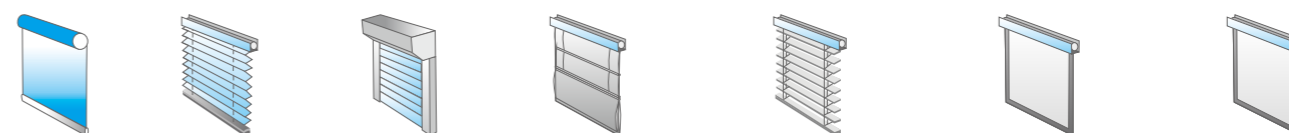


230V/50Hz EC type six-core wire

## Accessori/Accessories

Diametro Tubo	Corona	Adattatore	Codice Articolo
Tube size	Crown	Adaptor	Item Code
φ43			35MM-GMAC43
φ61			35MM-GMAC61

## Utilizzo/Use



**Tende a rullo motorizzate** Motorized roller blinds  
**Tende plisset motorizzate** Motorized pleatedblinds  
**Tapparelle motorizzate** Motorized roller shutters  
**Tende a pacchetto motorizzate** Motorized roman blinds  
**Veneziane in legno motorizzate** Motorized wooden venetian blinds  
**Schermo proiezione motorizzato** Motorized projection screen  
**Persiane a rullo antivento motorizzate** Motorized windproof roller shutter

## Parametri Tecnici/Technical Parameters

<b>Codice prodotto</b>	Product code	35MM-GME6
<b>Parametri tecnici (N.m)</b>	Technical parameters (N.m)	6
<b>Velocità (rpm)</b>	Speed (rpm)	28
<b>Diametro</b>	Motor tube diameter (mm)	35
<b>Classifica di protezione</b>	Protection rating (IP)	IP44
<b>Voltaggio (V~Hz)</b>	Voltage-Frequency (V~Hz)	230
<b>Assorbimento (A)</b>	Absortion (A)	0.64
<b>Consumo (W)</b>	Consumption (W)	146
<b>Lunghezza Cavo (mt)</b>	Cable length (M)	2.0
<b>Peso Motore (kg)</b>	Motor Weight (Kg)	1.4
<b>Lunghezza Tubo (mm)</b>	Tube length (M)	530
<b>Quantità per Confezione (pz)</b>	Package quantity (pcs)	10
<b>Certificazione</b>	Certification	

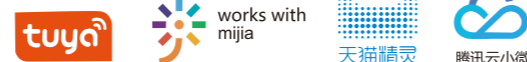
# 35MM-GMEQ

AC tubular Motor  
+WiFi Intelligence



WiFi Series

..... Applicable platform



## Outline



## Caratteristiche/Features

**Motore tubolare diam. 35mm WIFI fine corsa elettronico comando radio con 3° fine corsa + controllo APP TUYA + controllo vocale**

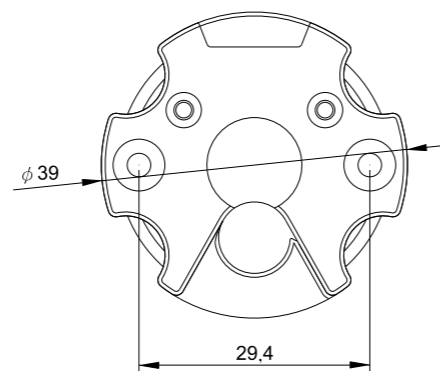
Electronic Limit + Built-in receiver, Frequency 433.92MHz + Dot-move&light-adjust function + Intelligent voice control + The Third Limit + Mobile APP control

## Telecomando/Remote Control

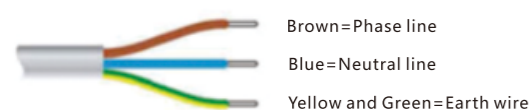
## Tipo di Testata/Limit Head Dimension



301-GMGC6018



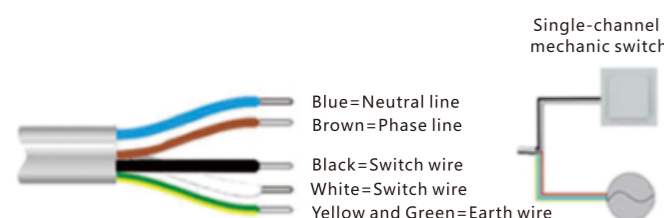
## Connessione Elettrica/Wire Connection



230V/50Hz



120V/60Hz

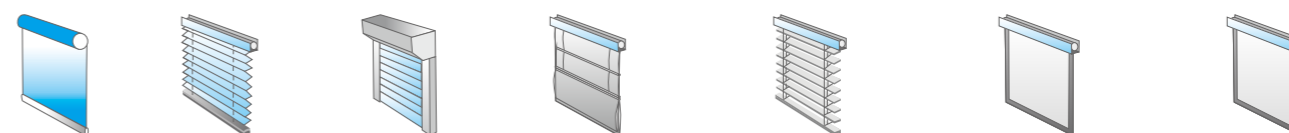


230V/50Hz EC type five-core wire

## Accessori/Accessories

Diametro Tubo	Corona	Adattatore	Codice Articolo
Tube size	Crown	Adaptor	Item Code
φ43			35MM-GMAC43
φ61			35MM-GMAC61

## Utilizzo/Use



- Tende a rullo motorizzate** Motorized roller blinds
- Tende plissettate motorizzate** Motorized pleated blinds
- Tapparelle motorizzate** Motorized roller shutters
- Tende a pacchetto motorizzate** Motorized roman blinds
- Veneziane in legno motorizzate** Motorized wooden venetian blinds
- Schermo proiezione motorizzato** Motorized projection screen
- Persiane a rullo antivento motorizzate** Motorized windproof roller shutter

## Parametri Tecnici/Technical Parameters

<b>Codice prodotto</b>	Product code	35MM-GMEQ6
<b>Parametri tecnici (N.m)</b>	Technical parameters (N.m)	6
<b>Velocità (rpm)</b>	Speed (rpm)	28
<b>Diametro</b>	Motor tube diameter (mm)	35
<b>Classifica di protezione</b>	Protection rating (IP)	IP44
<b>Voltaggio (V~Hz)</b>	Voltage-Frequency (V~Hz)	230
<b>Assorbimento (A)</b>	Absorption (A)	0.64
<b>Consumo (W)</b>	Consumption (W)	146
<b>Lunghezza Cavo (mt)</b>	Cable length (M)	2.0
<b>Peso Motore (kg)</b>	Motor Weight (Kg)	1.4
<b>Lunghezza Tubo (mm)</b>	Tube length (M)	530
<b>Quantità per Confezione (pz)</b>	Package quantity (pcs)	10
<b>Certificazione</b>	Certification	CCC CE

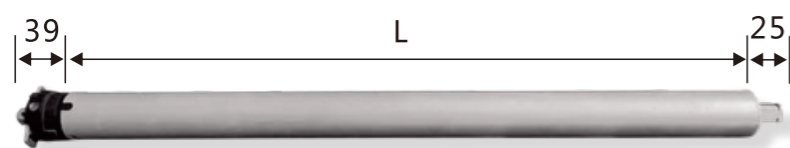
# 35MM-GMEQZ

AC tubular Motor  
+ Tuya Zigbee Intelligence



tuya zigbee Series

## Outline



## Caratteristiche/Features

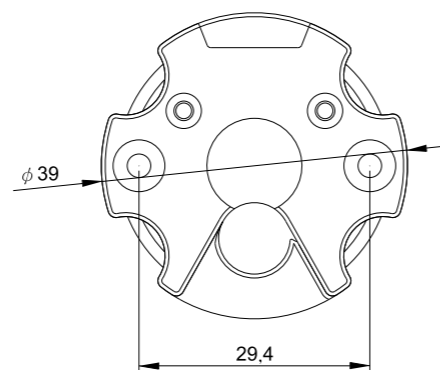
**Motore tubolare diam. 35mm Zeegbe fine corsa elettronico comando radio con 3° fine corsa**  
Electronic Limit + Built-in receiver, Frequency 433,92MHz + Dot-move&light-adjust function + The Third Limit

## Telecomando/Remote Control

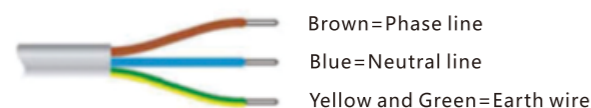


301-GMGC6018

## Tipo di Testata/Limit Head Dimension



## Caricatore/Charger



230V/50Hz

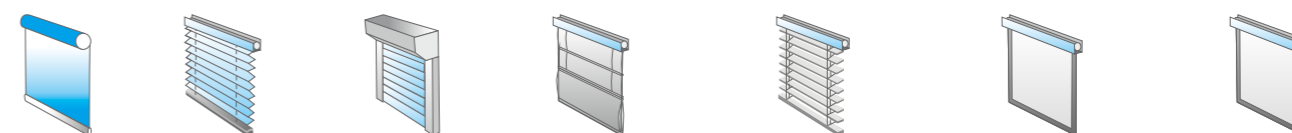


120V/60Hz

## Accessori/Accessories

Diametro Tubo	Corona	Adattatore	Codice Articolo
Tube size	Crown	Adaptor	Item Code
φ43			35MM-GMAC43
φ61			35MM-GMAC61

## Utilizzo/Use



**Tende a rullo motorizzate** Motorized roller blinds  
**Tende plisset motorizzate** Motorized pleatedblinds  
**Tapparelle motorizzate** Motorized roller shutters  
**Tende a pacchetto motorizzate** Motorized roman blinds  
**Veneziane in legno motorizzate** Motorized wooden venetian blinds  
**Schermo proiezione motorizzato** Motorized projection screen  
**Persiane a rullo antivento motorizzate** Motorized windproof roller shutter

## Parametri Tecnici/Technical Parameters

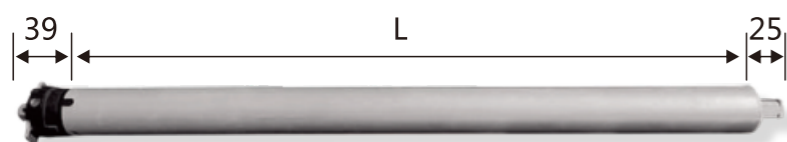
<b>Codice prodotto</b>	Product code	35MM-GMEQZ6
<b>Parametri tecnici (N.m)</b>	Technical parameters (N.m)	6
<b>Velocità (rpm)</b>	Speed (rpm)	28
<b>Diametro</b>	Motor tube diameter (mm)	35
<b>Classifica di protezione</b>	Protection rating (IP)	IP44
<b>Voltaggio (V~Hz)</b>	Voltage-Frequency (V~Hz)	230
<b>Assorbimento (A)</b>	Absortion (A)	0.64
<b>Consumo (W)</b>	Consumption (W)	146
<b>Lunghezza Cavo (mt)</b>	Cable length (M)	2.0
<b>Peso Motore (kg)</b>	Motor Weight (Kg)	1.4
<b>Lunghezza Tubo (mm)</b>	Tube length (M)	530
<b>Quantità per Confezione (pz)</b>	Package quantity (pcs)	10
<b>Certificazione</b>	Certification	CCC CE

# 35MM-GMLE

DC tubular Motor  
+Built-in Lithium Battery



## Outline



## Caratteristiche/Features

**Motore tubolare diam. 35 mm fine corsa elettronico comando radio con 3° fine corsa e batteria integrata**  
DC motor + Electronic limit + Built-in receiver, Frequency 433.92MHz + Built-in lithium battery + Low power standby + Dot-move&light-adjust + The Third limit

## Telecomando/Remote Control



301-GMGC6018

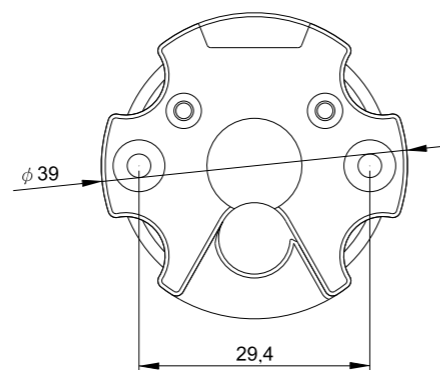
## Caricatore/Charger



3.5DC Charger 35MM-GMCH

Input : 100 V-240V/60Hz-5 0Hz 0.8A  
Output : 12.0V---2.0A 24.0W

## Tipo di Testata/Limit Head Dimension



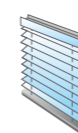
## Accessori/Accessories

Diametro Tubo	Corona	Adattatore	Codice Articolo
Tube size	Crown	Adaptor	Item Code
φ43			35MM-GMAC43
φ61			35MM-GMAC61

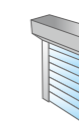
## Utilizzo/Use



**Tende a rullo motorizzate**  
Motorized roller blinds



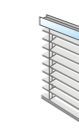
**Tende plisset motorizzate**  
Motorized pleatedblinds



**Tapparelle motorizzate**  
Motorized roller shutters



**Tende a pacchetto motorizzate**  
Motorized roman blinds



**Veneziane in legno motorizzate**  
Motorized wooden venetian blinds



**Schermo proiezione motorizzato**  
Motorized projection screen



**Persiane a rullo antivento motorizzate**  
Motorized windproof roller shutter

## Parametri Tecnici/Technical Parameters

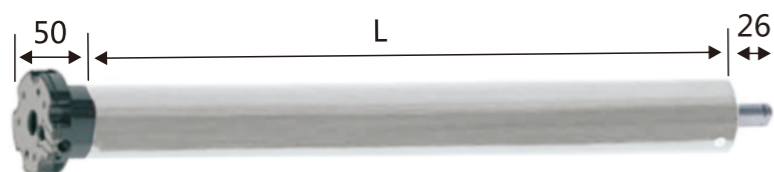
<b>Codice prodotto</b>	Product code	35MM-GMLE6
<b>Parametri tecnici (N.m)</b>	Technical parameters (N.m)	6
<b>Velocità (rpm)</b>	Speed (rpm)	24
<b>Diametro</b>	Motor tube diameter (mm)	35
<b>Classifica di protezione</b>	Protection rating (IP)	IP44
<b>Batteria</b>	Built-in battery	✓
<b>Capacità batteria (mAh)</b>	Battery capacity(mAh)	4800
<b>Frequenza voltaggio (V)</b>	Voltage-Frequency (V)	12
<b>Assorbimento (A)</b>	Absortion (A)	2.1
<b>Consumo (W)</b>	Consumption (W)	25.2
<b>Interfaccia caricamento</b>	Charging interface	3.5DC/JST
<b>Peso Motore (kg)</b>	Motor Weight (Kg)	1.4
<b>Lunghezza Tubo (mm)</b>	Tube length (M)	685
<b>Quantità per Confezione (pz)</b>	Package quantity (pcs)	10
<b>Certificazione</b>	Certification	CCC CE

# 45MM-EPS

AC tubular Motor



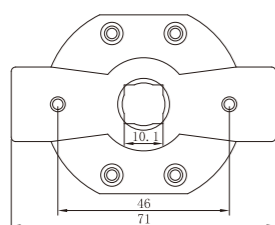
## Outline



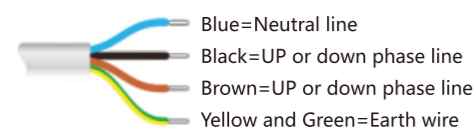
## Caratteristiche/Features

**Motore tubolare diam. 45 mm fine corsa meccanico**  
Mechanical limit switch

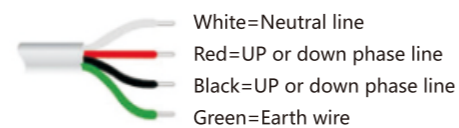
## Tipo di Testata/Limit Head Dimension



## Connessione Elettrica/Wire Connection



230V/50Hz



120V/60Hz

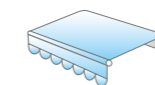
## Accessori/Accessories

Diametro Tubo	Corona	Adattatore	Codice Articolo
Tube size	Crown	Adaptor	Item Code
60 ottagonale			45MM-AC60OT
φ56			45MM-GMAC56
φ70			45MM-GMAC70
φ78			45MM-GMAC78

## Utilizzo/Use



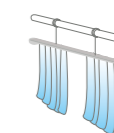
**Tende a rullo motorizzate**  
Motorized roller blinds



**Tende da sole motorizzate**  
Motorized Awning



**Tapparelle motorizzate**  
Motorized roller shutters



**Tende a pacchetto motorizzate**  
Lift curtain

## Parametri Tecnici/Technical Parameters

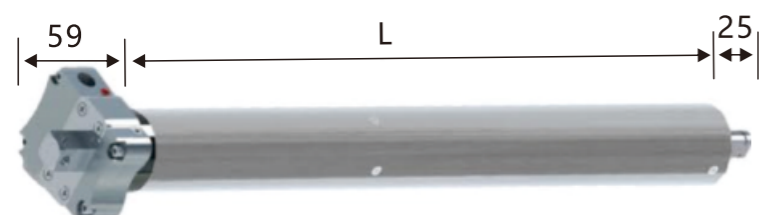
Codice prodotto	Product code	45MM-EPS30	45MM-EPS40	45MM-EPS50
<b>Parametri tecnici (N.m)</b>	Technical parameters (N.m)	30	40	50
<b>Velocità (rpm)</b>	Speed (rpm)	17	17	12
<b>Diametro</b>	Motor tube diameter (mm)	45	45	45
<b>Distanza tra limiti</b>	Limit switch capacity (Turns)	23	23	23
<b>Classifica di protezione</b>	Protection rating (IP)	IP44	IP44	IP44
<b>Voltaggio (V~Hz)</b>	Voltage-Frequency (V~Hz)	230/50	230/50	230/50
<b>Assorbimento (A)</b>	Absorption (A)	0.88	0.98	0.98
<b>Consumo (W)</b>	Consumption (W)	188	146	146
<b>Lunghezza Cavo (mt)</b>	Cable length (M)	2.0	2.0	2.0
<b>Peso Motore (kg)</b>	Motor Weight (Kg)	2.35	2.50	2.60
<b>Lunghezza Tubo (mm)</b>	Tube length (M)	485	520	520
<b>Quantità per Confezione (pz)</b>	Package quantity (pcs)	10	10	10
<b>Certificazione</b>	Certification			

# 45MM-GMM

AC tubular Motor



## Outline

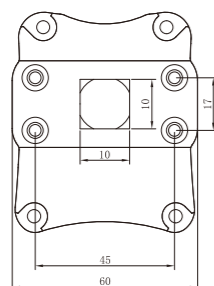


## Caratteristiche/Features

**Motore tubolare diam. 45 mm fine corsa meccanico con manovra di soccorso**

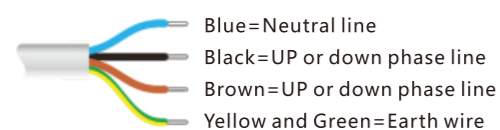
Mechanical limit switch + Manual override to operate the motor in case of electricity lack

## Tipo di Testata/Limit Head Dimension

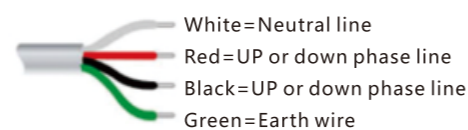


45MM-GM86CRANK

## Connessione Elettrica/Wire Connection



230V/50Hz

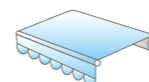


120V/60Hz

## Accessori/Accessories

Diametro Tubo	Corona	Adattatore	Codice Articolo
Tube size	Crown	Adaptor	Item Code
60 ottagonale			45MM-AC60OT
φ56			45MM-GMAC56
φ70			45MM-GMAC70
φ78			45MM-GMAC78

## Utilizzo/Use



**Tende da sole motorizzate**  
Motorized Awning



**Persiane a rullo antiventto motorizzate**  
Motorized windproof roller shutter

## Parametri Tecnici/Technical Parameters

Codice prodotto	Product code	45MM-GMM30	45MM-GMM40	45MM-GMM50
<b>Parametri tecnici (N.m)</b>	Technical parameters (N.m)	30	40	50
<b>Velocità (rpm)</b>	Speed (rpm)	17	17	12
<b>Diametro</b>	Motor tube diameter (mm)	45	45	45
<b>Distanza tra limiti</b>	Limit switch capacity (Turns)	23	23	23
<b>Classifica di protezione</b>	Protection rating (IP)	IP44	IP44	IP44
<b>Voltaggio (V~Hz)</b>	Voltage-Frequency (V~Hz)	230/50	230/50	230/50
<b>Assorbimento (A)</b>	Absorption (A)	0.88	0.98	0.98
<b>Consumo (W)</b>	Consumption (W)	188	146	146
<b>Lunghezza Cavo (mt)</b>	Cable length (M)	2.0	2.0	2.0
<b>Peso Motore (kg)</b>	Motor Weight (Kg)	2.90	3.10	3.10
<b>Lunghezza Tubo (mm)</b>	Tube length (M)	540	540	540
<b>Quantità per Confezione (pz)</b>	Package quantity (pcs)	6	6	6
<b>Certificazione</b>	Certification			

# 45MM-GMR

AC tubular Motor



## Outline



## Caratteristiche/Features

**Motore tubolare diam. 45 mm fine corsa meccanico comando radio**

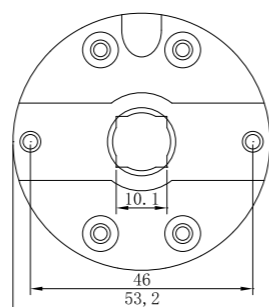
Mechanical limit switch + Built-in receiver, Frequency 433.92MHz

## Telecomando/Remote Control

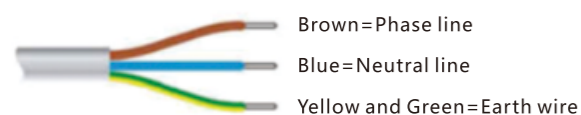
## Tipo di Testata/Limit Head Dimension



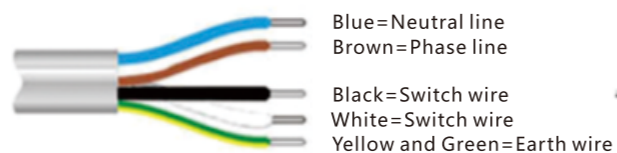
301-GMGC6018



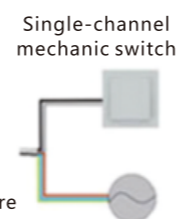
## Connessione Elettrica/Wire Connection



230V/50Hz



230V/50Hz RC type 5 FILI / 5 CORE WIRE



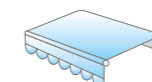
## Accessori/Accessories

Diametro Tubo	Corona	Adattatore	Codice Articolo
Tube size	Crown	Adaptor	Item Code
60 ottagonale			45MM-AC60OT
φ56			45MM-GMAC56
φ70			45MM-GMAC70
φ78			45MM-GMAC78

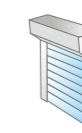
## Utilizzo/Use



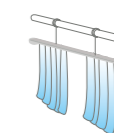
**Tende a rullo motorizzate**  
Motorized roller blinds



**Tende da sole motorizzate**  
Motorized Awning



**Tapparelle motorizzate**  
Motorized roller shutters



**Tende a pacchetto motorizzate**  
Lift curtain

## Parametri Tecnici/Technical Parameters

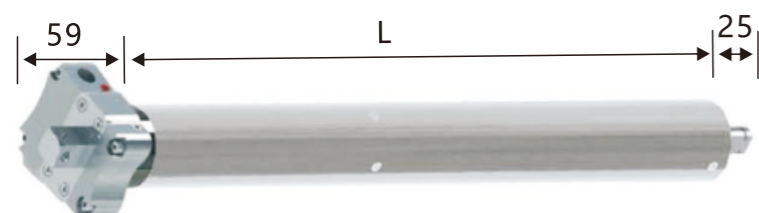
Codice prodotto	Product code	45MM-GMR30	45MM-GMR40	45MM-GMR50
<b>Parametri tecnici (N.m)</b>	Technical parameters (N.m)	30	40	50
<b>Velocità (rpm)</b>	Speed (rpm)	17	17	12
<b>Diametro</b>	Motor tube diameter (mm)	45	45	45
<b>Distanza tra limiti</b>	Limit switch capacity (Turns)	23	23	23
<b>Classifica di protezione</b>	Protection rating (IP)	IP44	IP44	IP44
<b>Voltaggio (V~Hz)</b>	Voltage-Frequency (V~Hz)	230/50	230/50	230/50
<b>Assorbimento (A)</b>	Absorption (A)	0.88	0.98	0.98
<b>Consumo (W)</b>	Consumption (W)	188	146	146
<b>Lunghezza Cavo (mt)</b>	Cable length (M)	2.0	2.0	2.0
<b>Peso Motore (kg)</b>	Motor Weight (Kg)	2.35	2.50	2.60
<b>Lunghezza Tubo (mm)</b>	Tube length (M)	560	580	580
<b>Quantità per Confezione (pz)</b>	Package quantity (pcs)	10	10	10
<b>Certificazione</b>	Certification			

# 45MM-GMRM

AC tubular Motor



## Outline



## Caratteristiche/Features

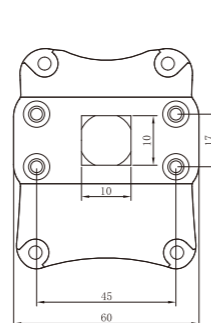
**Motore tubolare diam. 45 mm con fine corsa meccanico comando radio e manovra di soccorso**  
 Mechanical limit switch + Built-in receiver, Frequency 433.92Hz + Manual override to operate the window in case of electricity lack

## Telecomando/Remote Control



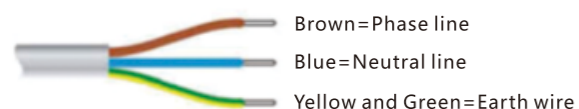
301-GMGC6018

## Tipo di Testata/Limit Head Dimension



45MM-GM86CRANK

## Connessione Elettrica/Wire Connection



230V/50Hz

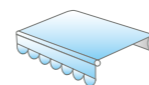


120V/60Hz

## Accessori/Accessories

Diametro Tubo	Corona	Adattatore	Codice Articolo
Tube size	Crown	Adaptor	Item Code
60 ottagonale			45MM-AC60OT
φ56			45MM-GMAC56
φ70			45MM-GMAC70
φ78			45MM-GMAC78

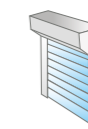
## Utilizzo/Use



**Tende da sole motorizzate**  
Motorized Awning



**Persiane a rullo antivento motorizzate**  
Motorized windproof roller shutter



**Tapparelle motorizzate**  
Motorized roller shutters

## Parametri Tecnici/Technical Parameters

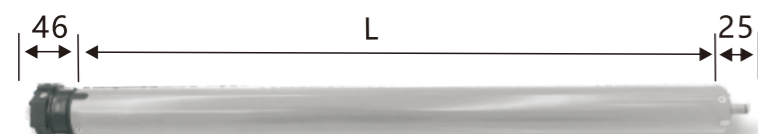
Codice prodotto	Product code	45MM-GMRM30	45MM-GMRM40	45MM-GMRM50
<b>Parametri tecnici (N.m)</b>	Technical parameters (N.m)	30	40	50
<b>Velocità (rpm)</b>	Speed (rpm)	17	17	12
<b>Diametro</b>	Motor tube diameter (mm)	45	45	45
<b>Distanza tra limiti</b>	Limit switch capacity (Turns)	23	23	23
<b>Classifica di protezione</b>	Protection rating (IP)	IP44	IP44	IP44
<b>Voltaggio (V~Hz)</b>	Voltage-Frequency (V~Hz)	230/50	230/50	230/50
<b>Assorbimento (A)</b>	Absortion (A)	0.88	0.98	0.98
<b>Consumo (W)</b>	Consumption (W)	188	146	146
<b>Lunghezza Cavo (mt)</b>	Cable length (M)	2.0	2.0	2.0
<b>Peso Motore (kg)</b>	Motor Weight (Kg)	2.90	3.10	3.30
<b>Lunghezza Tubo (mm)</b>	Tube length (M)	650	650	650
<b>Quantità per Confezione (pz)</b>	Package quantity (pcs)	6	6	6
<b>Certificazione</b>	Certification			

# 45MM-GME

AC tubular Motor



## Outline



## Caratteristiche/Features

**Motore tubolare diam. 45 mm fine corsa elettronico comando radio con 3° fine corsa**

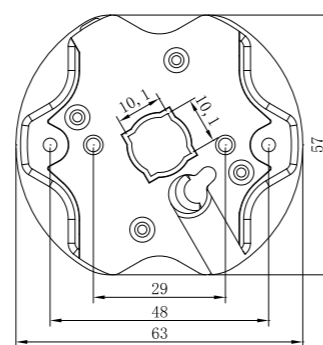
Electronic Limit + Built-in receiver, Frequency 433.92MHz + Dot-move&light-adjust function + Third Limit

## Telecomando/Remote Control

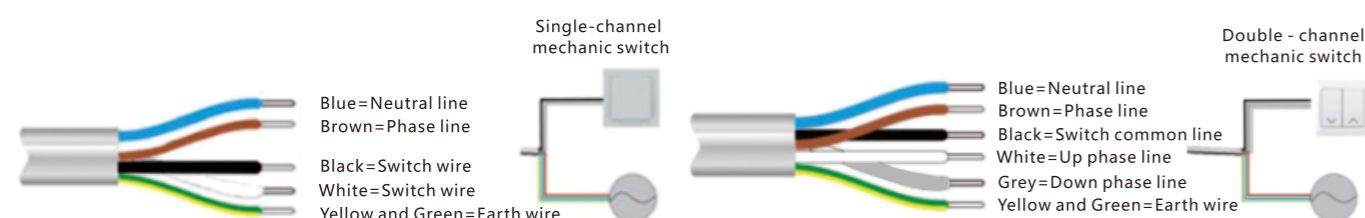


301-GMGC6018

## Tipo di Testata/Limit Head Dimension



## Connessione Elettrica/Wire Connection



230V/50Hz EC type five-core wire

230V/50Hz EC type six-core wire

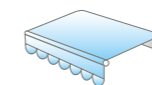
## Accessori/Accessories

Diametro Tubo	Corona	Adattatore	Codice Articolo
Tube size	Crown	Adaptor	Item Code
60 ottagonale			45MM-AC60OT
φ56			45MM-GMAC56
φ70			45MM-GMAC70
φ78			45MM-GMAC78

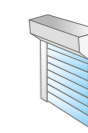
## Utilizzo/Use



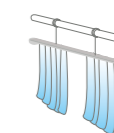
**Tende a rullo motorizzate**  
Motorized roller blinds



**Tende da sole motorizzate**  
Motorized Awning



**Tapparelle motorizzate**  
Motorized roller shutters



**Tende a pacchetto motorizzate**  
Lift curtain

## Parametri Tecnici/Technical Parameters

Codice prodotto	Product code	45MM-GME30	45MM-GME40	45MM-GME50
<b>Parametri tecnici (N.m)</b>	Technical parameters (N.m)	30	40	50
<b>Velocità (rpm)</b>	Speed (rpm)	17	17	12
<b>Diametro</b>	Motor tube diameter (mm)	45	45	45
<b>Classifica di protezione</b>	Protection rating (IP)	IP44	IP44	IP44
<b>Voltaggio (V~Hz)</b>	Voltage-Frequency (V~Hz)	230/50	230/50	230/50
<b>Assorbimento (A)</b>	Absortion (A)	0.88	0.98	0.98
<b>Consumo (W)</b>	Consumption (W)	188	146	146
<b>Lunghezza Cavo (mt)</b>	Cable length (M)	2.0	2.0	2.0
<b>Peso Motore (kg)</b>	Motor Weight (Kg)	2.90	3.10	3.10
<b>Lunghezza Tubo (mm)</b>	Tube length (M)	590	600	600
<b>Quantità per Confezione (pz)</b>	Package quantity (pcs)	10	10	10
<b>Certificazione</b>	Certification			

# 45MM-GMEQ

AC tubular Motor

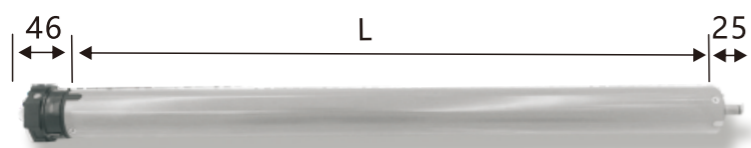


WiFi Series

----- Applicable platform



Outline



## Caratteristiche/Features

**Motore tubolare diam. 45 mm WIFI fine corsa elettronico comando radio con 3° fine corsa + controllo APP TUYA + controllo vocale**

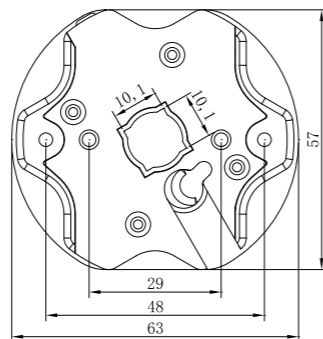
Electronic Limit + Built-in receiver, Frequency 433.92MHz + Dot-move&light-adjust function + Intelligent voice control + The Third Limit + Mobile APP control

## Telecomando/Remote Control

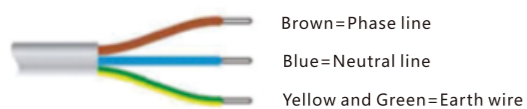
## Tipo di Testata/Limit Head Dimension



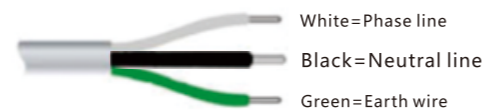
301-GMGC6018



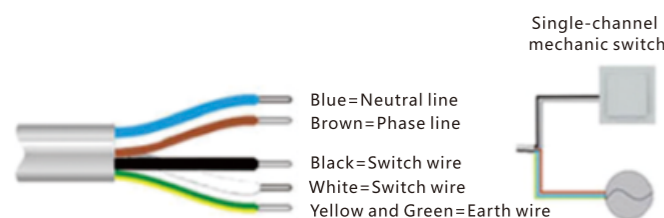
## Connessione Elettrica/Wire Connection



230V/50Hz



120V/60Hz



230V/50Hz EC type five-core wire

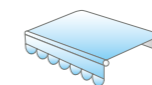
## Accessori/Accessories

Diametro Tubo	Corona	Adattatore	Codice Articolo
Tube size	Crown	Adaptor	Item Code
60 ottagonale			45MM-AC60OT
φ56			45MM-GMAC56
φ70			45MM-GMAC70
φ78			45MM-GMAC78

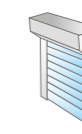
## Utilizzo/Use



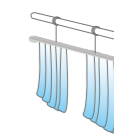
Tende a rullo motorizzate  
Motorized roller blinds



Tende da sole motorizzate  
Motorized Awning



Tapparelle motorizzate  
Motorized roller shutters



Tende a pacchetto motorizzate  
Lift curtain

## Parametri Tecnici/Technical Parameters

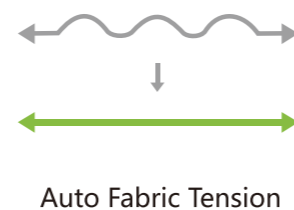
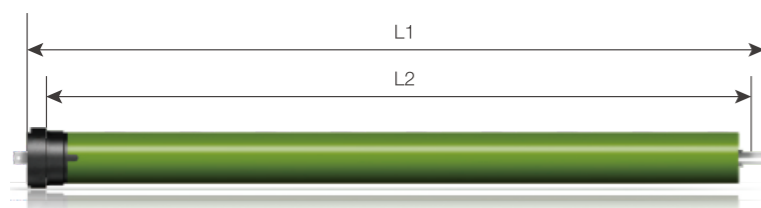
Codice prodotto	Product code	45MM-GMEQ30	45MM-GMEQ40	45MM-GMEQ50
Parametri tecnici (N.m)	Technical parameters (N.m)	30	40	50
Velocità (rpm)	Speed (rpm)	17	17	12
Diametro	Motor tube diameter (mm)	45	45	45
Classifica di protezione	Protection rating (IP)	IP44	IP44	IP44
Voltaggio (V~Hz)	Voltage-Frequency (V~Hz)	230/50	230/50	230/50
Assorbimento (A)	Absortion (A)	0.88	0.98	0.98
Consumo (W)	Consumption (W)	188	146	146
Lunghezza Cavo (mt)	Cable length (M)	2.0	2.0	2.0
Peso Motore (kg)	Motor Weight (Kg)	2.90	3.10	3.10
Lunghezza Tubo (mm)	Tube length (M)	590	600	600
Quantità per Confezione (pz)	Package quantity (pcs)	10	10	10
Certificazione	Certification			

# 45MM-DMED

AC tubular Motor



Outline



## Caratteristiche/Features

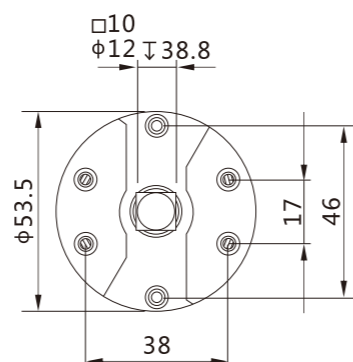
**Motore tubolare diam. 45 mm elettronico con finecorsa sulla battuta del cassonetto**  
 Electronic Limit + Built-in receiver, Frequency 433.92MHz with automatic end limit

## Telecomando/Remote Control

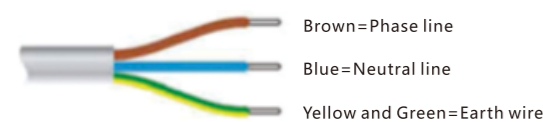


301-DMDC90

## Tipo di Testata/Limit Head Dimension



## Connessione Elettrica/Wire Connection

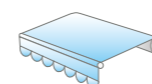


230V/50Hz

## Accessori/Accessories

Diametro Tubo	Corona	Adattatore	Codice Articolo
Tube size	Crown	Adaptor	Item Code
φ70			45MM-GMAC70
φ78			45MM-GMAC78

## Utilizzo/Use



Tende da sole motorizzate  
Motorized Awning



Wind-Sun Sensor DET-DM116B



Enable / Disable Sun Detection

## Parametri Tecnici/Technical Parameters

<b>Codice prodotto</b>	Product code	45MM-DMED40
<b>Parametri tecnici (N.m)</b>	Technical parameters (N.m)	40
<b>Velocità (rpm)</b>	Speed (rpm)	15
<b>Diametro</b>	Motor tube diameter (mm)	45
<b>Classifica di protezione</b>	Protection rating (IP)	IP44
<b>Assorbimento (A)</b>	Absortion (A)	0.99
<b>Consumo (W)</b>	Consumption (W)	228
<b>Lunghezza Cavo (mt)</b>	Cable length (M)	2.0
<b>Peso Motore (kg)</b>	Motor Weight (Kg)	2.90
<b>Lunghezza Tubo (mm)</b>	Tube length (M)	633
<b>Quantità per Confezione (pz)</b>	Package quantity (pcs)	10
<b>Certificazione</b>	Certification	

## Comandi per motori tubolari

### Tubular motor control system

#### Telecomando/ Remote Control

##### Descrizione funzioni

Function description

##### 1. Progettazione ingegneristica

1. Engeneering design

##### 2. Batterie AAA 1.5 V facili da sostituire

2. 1.5 V AAA battery easy for replacement

##### 3. Design a bassa perdita di potenza, la batteria dura almeno 2 anni

3. Lower powerloss design , battery last at least 2 years

#### Batteria : 2 batterie x 1.5 V AAA

Battery : 2 AAA x 1.5 V battery

#### Distanza trasmissione : 100 mt all'esterno , 35 mt all'interno

Transmit distance : 100 meters outdoor , 35 meters indoor

#### Frequenza : 433,92 MHZ

Frequency : 433.92 MHZ

#### Temperatura di lavoro : - 20°C / + 50°C

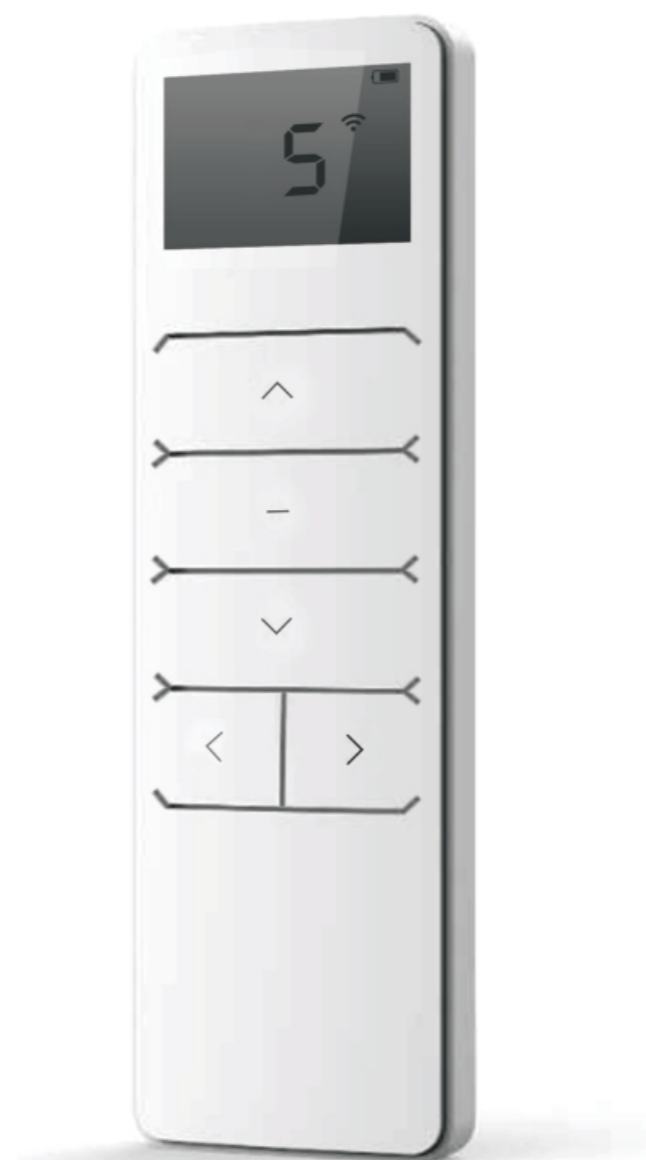
Working Temp : -20°C / + 50°C

#### Dimensioni : 130mm x 45mm x 13mm

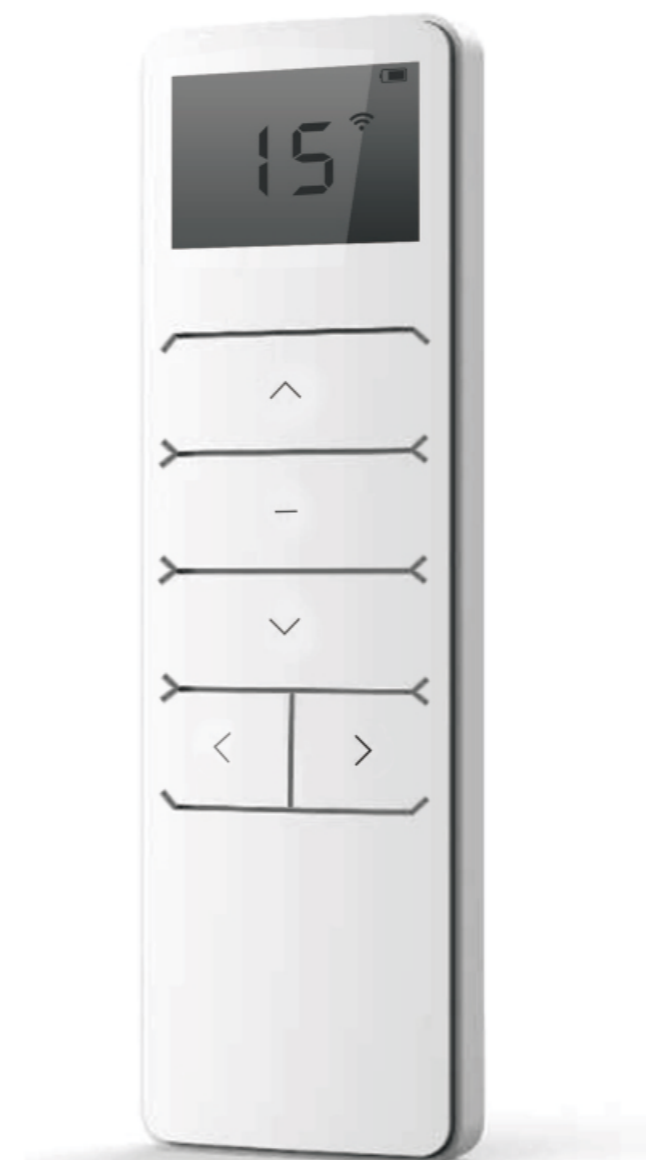
Dimensions : 130mm x 45mm x 13mm



301-GMGC6018



305-GMGC6018



315-GMGC6018



301-DMDC90

## Sensore sole vento

### Wind sun sensor

**3 livelli di forza (vento) e 4 livelli d'intensità (sole)**

3 wind strength scale and 4 sunlight intensity levels

**Controllo wireless**

Wireless control

**Potenza in entrata: 100-240V / 50Hz,60Hz**

Input power: 100-240V / 50Hz,60Hz

**Attivazione/disattivazione rilevazione luce solare**

Enable/disable sunlight detection

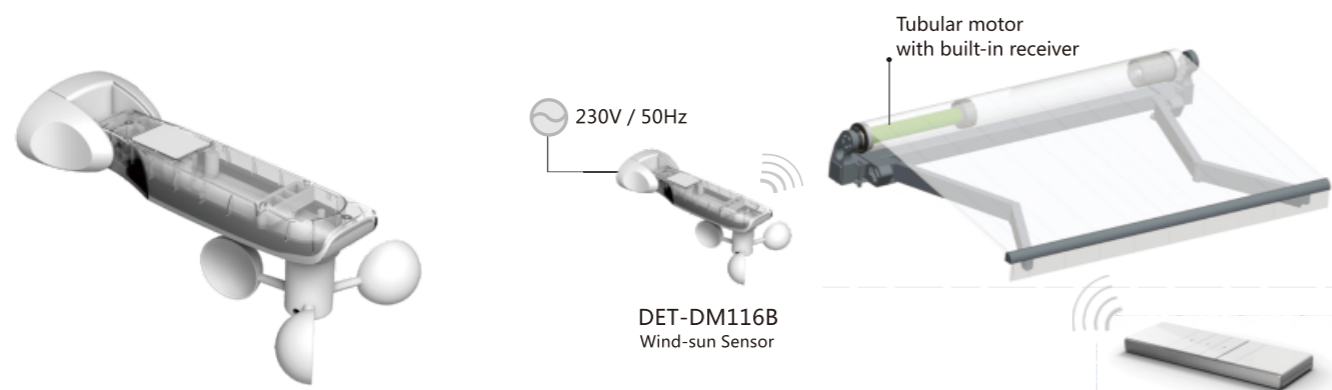
**Frequenza radio: 433.92MHz**

Radio frequency: 433.92MHz

**Dimensioni : 244x110x30(mm)**

Dimension : 244x110x30(mm)

DET-DM116B  
Wind-sun Sensor



## Sensore di movimento

### Vibration sensor

**DET-DM510HF è un sensore di vibrazione alimentato a batteria per tende da sole motorizzate, con 10 livelli di sensibilità regolabili. Ritrae e protegge la tenda motorizzata dalle raffiche.**

DET-DM510HF is a battery powered vibration sensor for motorized awning, with adjustable 10 sensitivity level. It retracts and protects motorized awning against gust.

**Quando il vento diventa più forte del livello di sensibilità preimpostato, il sensore ordinerà al motore della tenda di ritrarsi.**

When wind gets stronger than preset sensitivity level, the sensor will instruct the motor in the awning to retract.

**Per tende da sole motorizzate**

For motorized awning

**Alimentato a batteria**

Battery powered

**2 Batterie AAA**

2 AAA BATTERIES

**Frequenza Radio: 433.92MHz**

Radio frequency: 433.92MHz

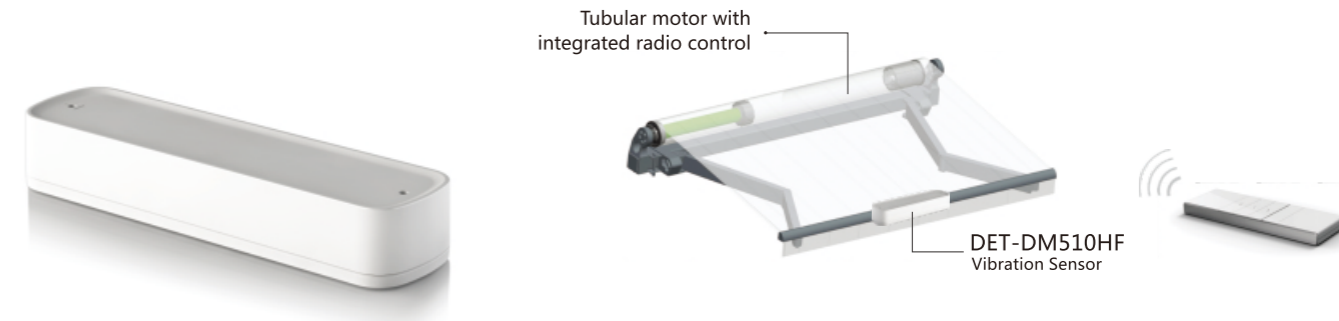
**Temperatura di lavoro: -20°C + ~50°**

Working temperature: -20°C + ~50°

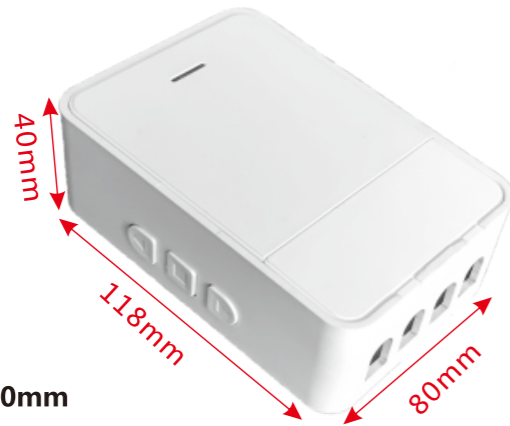
**Dimension: 150x41x26(mm)**

Dimensions: 150x41x26(mm)

DET-DM510HF  
Vibration Sensor



# Centraline/External receiver REC-GC2009



**Dimensioni: 118x80x40mm**  
Dimensions:118x80x40mm

**Introduzione prodotto/** Product introduction

**Sistema ricevente radio/** Radio receiver System

**Raggio di controllo 200m all'aria aperta/** Control range 200m in open air

**Protezione anti-shock, specialmente per motori tubolari/** Shock-proof relays, specially for tubular motor

**CPU standard Industriale/** Industry standard CPU

**Assemblaggio automatico della macchina SMT, a prova di umidità/** SMT machine automatical assembly, damp proof craft

**Funzioni:**

**Movimento continuo e graduale**

**Chiusura automatica in 15 secondi**

**Controllo remoto con tasto singolo o multiplo**

**Interruttore di ritorno esterno a chiave singola o doppia**

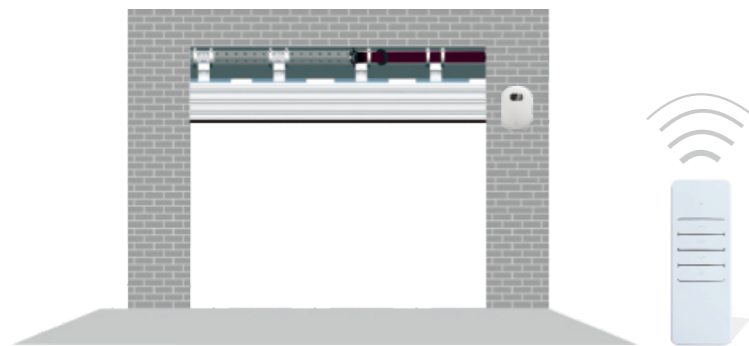
Function:

Inching and continuity motion;

Automatic door closing in 15 seconds;

Remot control single or multi key control;

External single or double key rebound switch.

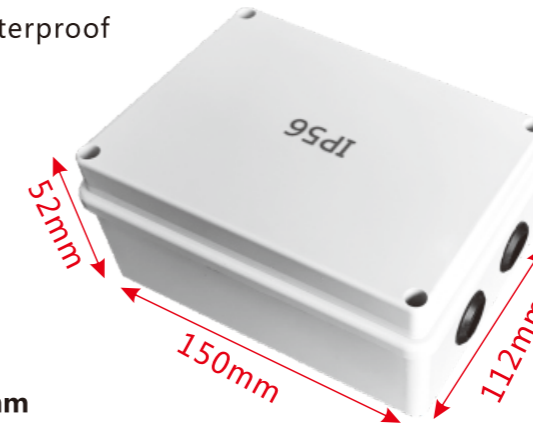


## Parametri/ Parameter

Modello Model	Voltaggio Rated voltage	Temperatura di lavoro Working temp.	Frequenza Frequency	Potenza in uscita Output power	Potenza trasmessa Transmit power	Sensibilità Sensibility	Operazioni Operation
REC-GC2009	AC200V~250V 50/60HZ	-20°C~+65°C	433.92MHZ	1000W	≤10MW	≤50M	Romote/Manua

# Centraline/External receiver REC-GC2010

**Resistente all'acqua/** Waterproof



**Dimensioni: 150x112x52mm**  
Dimensions:150x112x52mm

**Introduzione prodotto/** Product introduction

**Sistema ricevente radio/** Radio receiver System

**Raggio di controllo 200m all'aria aperta/** Control range 200m in open air

**Protezione anti-shock, specialmente per motori tubolari/** Shock-proof relays, specially for tubular motor

**CPU standard Industriale/** Industry standard CPU

**Assemblaggio automatico della macchina SMT, a prova di umidità/** SMT machine automatical assembly, damp proof craft

**Funzioni:**

**Movimento continuo e graduale**

**Chiusura automatica in 15 secondi**

**Controllo remoto con tasto singolo o multiplo**

**Interruttore di ritorno esterno a chiave singola o doppia**

Function:

Inching and continuity motion;

Automatic door closing in 15 seconds;

Remot control single or multi key control;

External single or double key rebound switch.



301-GMGC6018

## Parametri/ Parameter

Modello Model	Voltaggio Rated voltage	Temperatura di lavoro Working temp.	Frequenza Frequency	Potenza in uscita Output power	Potenza trasmessa Transmit power	Sensibilità Sensibility	Operazioni Operation
REC-GC2010	AC200V~250V 50/60HZ	-20°C~+65°C	433.92MHZ	1000W	≤10MW	≤50M	Romote/Manua

# Accessori - Accessories

## Corona/adattatore - Crown/adapter

<p><b>Corona Crown</b></p> <p>Plastic</p>	<p><b>Adattatore Adapter</b></p> <p>Plastic</p>
<p><b>Corona Crown</b></p> <p>Plastic</p>	<p><b>Adattatore Adapter</b></p> <p>Plastic</p>
<p><b>Corona Crown</b></p> <p>Plastic</p>	<p><b>Adattatore Adapter</b></p> <p>Plastic</p>
<p><b>Corona Crown</b></p> <p>Plastic</p>	<p><b>Adattatore Adapter</b></p> <p>Plastic</p>
<p><b>Corona Crown</b></p> <p>Plastic</p>	<p><b>Adattatore Adapter</b></p> <p>Plastic</p>
<p><b>Corona Crown</b></p> <p>Plastic</p>	<p><b>Adattatore Adapter</b></p> <p>Plastic</p>

# Accessori - Accessories

## Corona/adattatore - Crown/adapter

<p><b>Corona Crown</b></p> <p>Plastic</p>	<p><b>Adattatore Adapter</b></p> <p>Plastic</p>
<p><b>Corona Crown</b></p> <p>Plastic</p>	<p><b>Adattatore Adapter</b></p> <p>Rubber</p>

# Accessori - Accessories

## Staffa - Bracket

<p><b>Staffa - Bracket 45MM-GMGZ03</b></p>	<p><b>Staffa - Bracket GMGZ15</b></p>
<p><b>Staffa - Bracket 45MM-GMGZ89</b></p>	<p><b>Staffa - Bracket 35MM-GM10015</b></p>

## Motori per tende arrciate

Motor for drapery curtain

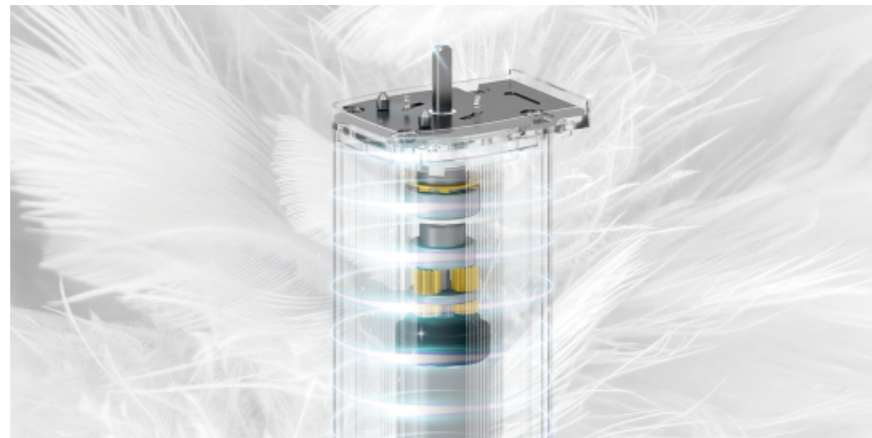


# EU8R02

## CURTAIN MOTOR

### ELECTRIC CURTAIN SYSTEM | SYSTEM STRUCTURE ANALYSIS GRAPHICS

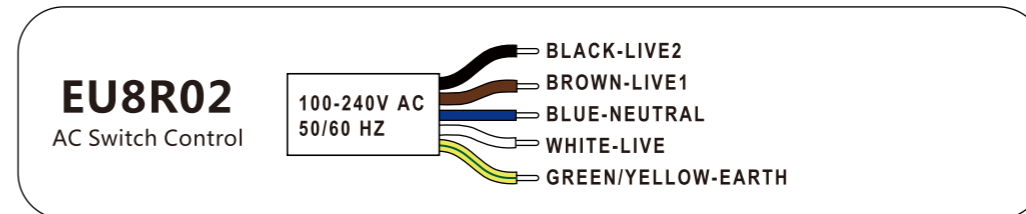
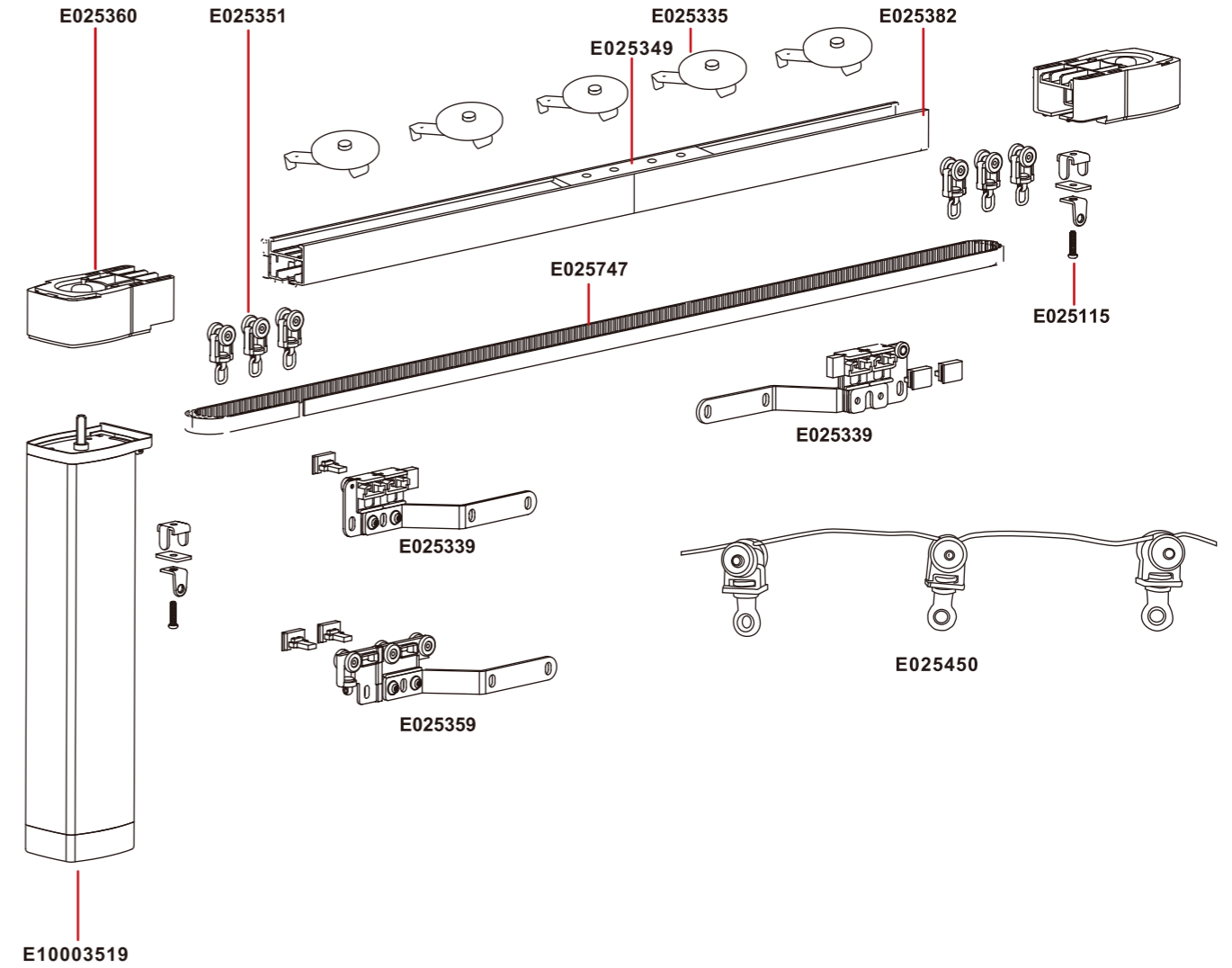
#### THE BEST HOT SELLING AND ECONOMIC MODEL



- **Design strutturale ultra silenzioso con motore DC.**  
Ultra-quiet structural design with DC motor.
- **Tre impostazioni di velocità del motore (75/90/110 giri/min) per soddisfare le tue esigenze: più veloce per tende/tendaggi più grandi, più lento per quelle più piccole.**  
Three motor speed settings (75/90/110rpm) to suit your needs faster for larger curtains/ drapes, slower for smaller one.
- **Avvio e arresto graduali con 3 posizioni limite preimpostate (75%, 50%, 25%).**  
Soft start and stop with 3 preset limit position (75%, 50%, 25%).
- **Azionamento manuale della tenda in caso di interruzione di corrente.**  
Operating the curtain manually in case of power failure.
- **Sistema di cintura tessile resistente applicato, facile da installare.**  
Applied durable textile belt system, easy for installation.



<b>Tensione Nominale</b> Rated Voltage	100-240V AC	
<b>Frequenza Nominale</b> Rated Frequency	50/60Hz	
<b>Corrente Nominale</b> Rated Current	≤0.3A	
<b>Coppia Nominale</b> Rated Torque	1.2N.m	
<b>Velocità Nominale</b> Rated Speed	75/90/110rpm	
<b>Sistema di funzionamento</b> Working system	S3 50%	
<b>Grado IP</b> IP Grade	IP41	
<b>Rumorosità</b> Noise	< 30dB	
<b>Dimensioni</b> Size	71X50.6X284mm	71X50.6X304mm
<b>Codice Prodotto</b> Product Code	EU8R02	EU8R02 WIFI
<b>Funzioni</b> Function	RF wireless control Dry contact	TUYA WIFI+5 WIRES RF wireless control Dry contact



E025382 TRACK	CURVATURE RADIUS	4m	6m	8m	12m
	—	50kg	40kg	30kg	20kg
	R400	40kg	30kg	20kg	—
	R2000	40kg	30kg	20kg	—
	R400	25kg	20kg	—	—

# EU9R03

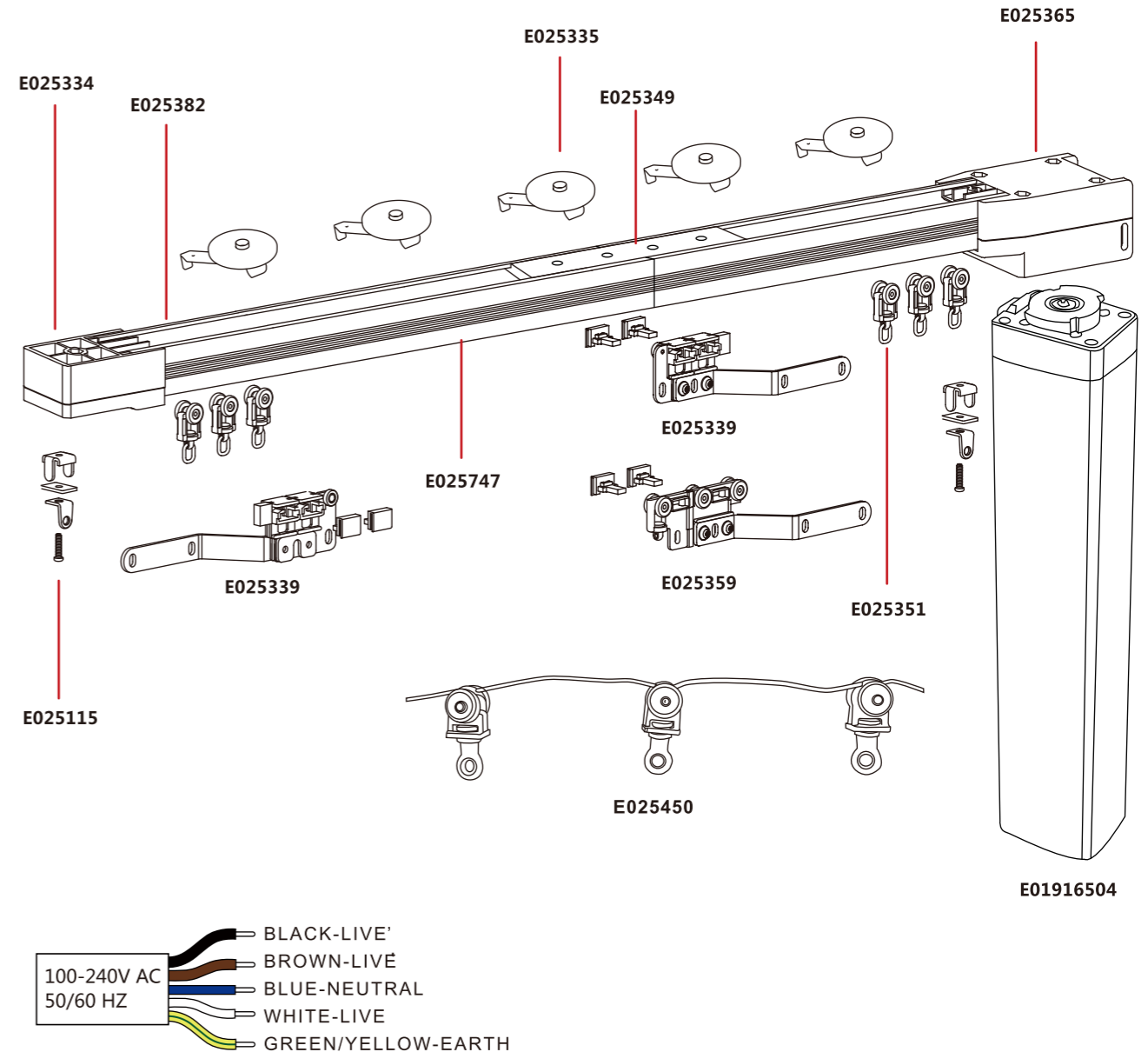
## CURTAIN MOTOR

### ELECTRIC CURTAIN SYSTEM | SYSTEM STRUCTURE ANALYSIS GRAPHICS

- AC SWITCH CONTROL
- DRY CONTACT
- RF WIRELESS CONTROL
- TOUCH CONTROL
- MANUAL OPERATION



- **Design strutturale classico, motore DC da 2 Nm per carichi pesanti.**  
Classic structural design, heavy duty 2Nm DC motor.
- **La funzione di partenza manuale può essere attivata o disattivata.**  
Touch motion control function can be switched on or off.
- **Telecomando e interruttore AC a 5 fili, perfetto per l'automazione alberghiera.**  
Remote control and 5 wires AC switch control, perfect for hotel automation.
- **Azionamento manuale della tenda in caso di interruzione di corrente.**  
Operating the curtain manually in case of power failure.
- **Binario con design autolubrificante per tende diritte e curve.**  
Track with self-lubricating design for straight and curve curtains.
- **Motore DC silenzioso, doppia modalità, telecomando a controllo wireless o interruttore AC.**  
Quiet DC motor, wireless remote control or AC switch control dual modes.
- **Con funzione a partenza e arrivo graduale.**  
With slow start, slow stop function.
- **Binario con design autolubrificante, con sistema di cinghie tessili resistenti, facile da installare.**  
Track with self-lubricating design, with durable textile belt system, easy for installation.



Tensione Nominale Rated Voltage	100-240V AC
Frequenza Nominale Rated Frequency	50/60Hz
Corrente Nominale Rated Current	0.45A
Coppia Nominale Rated Torque	2.0N.m
Velocità Nominale Rated Speed	80rpm
Sistema di funzionamento Working system	S3 50%
Grado IP IP Grade	IP41
Rumorosità Noise	< 30dB
Dimensioni Size	50.6X60X327mm
Codice Prodotto Product Code	10001174   MD930
Funzioni Function	5 WIRES+RF RF wireless control Dry contact

E025382 TRACK	CURVATURE RADIUS	4M	6M	8M	12M
	—	80KG	80KG	60KG	40KG
	R400	60KG	50KG	45KG	30KG
	R2000	60KG	50KG	45KG	30KG
	R400	40KG	30KG	—	—

# EU100

CURTAIN MOTOR



MECHANICAL  
LIMIT



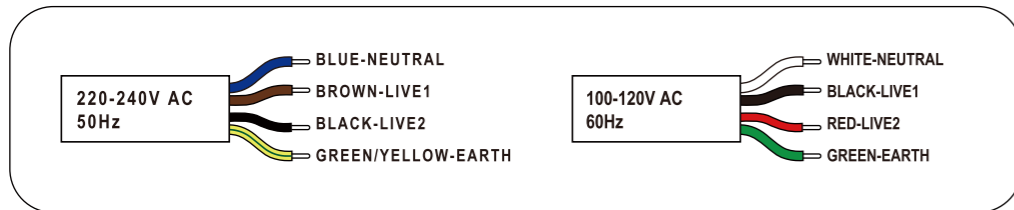
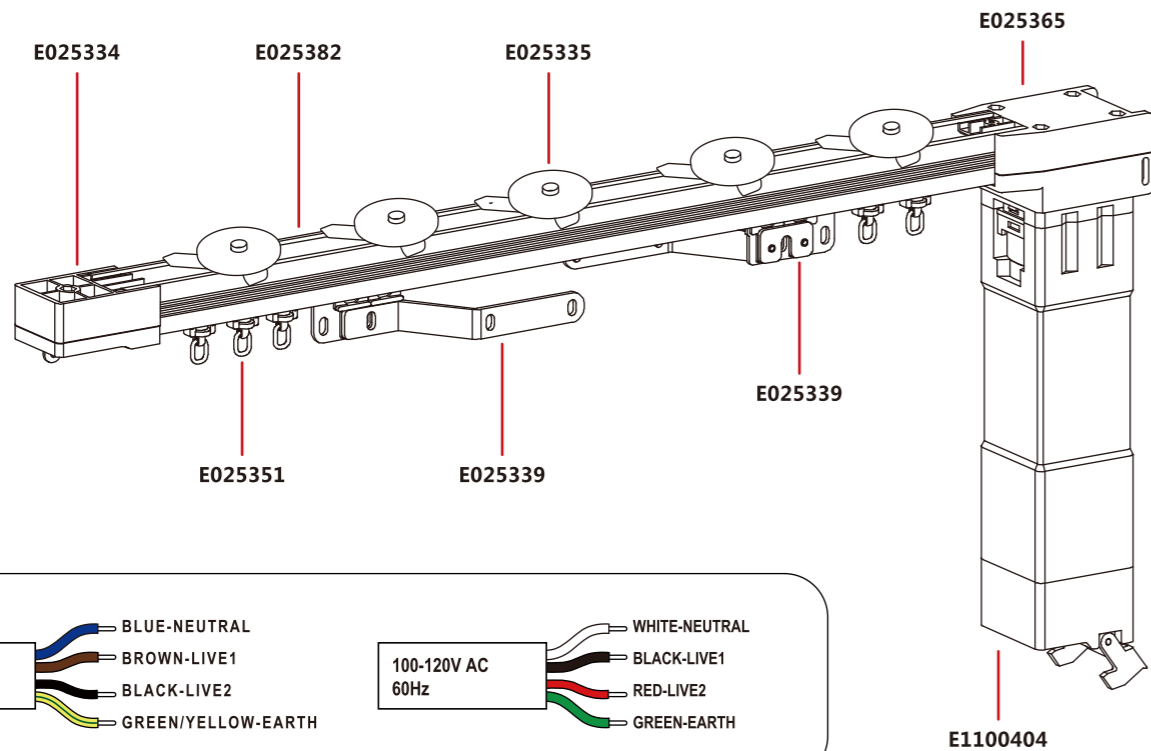
AC SWITCH  
CONTROL



AC MOTOR



<b>Tensione Nominale</b> Rated Voltage	220-240V AC
<b>Frequenza Nominale</b> Rated Frequency	50/60Hz
<b>Coppia Nominale</b> Rated Torque	1.2N.m
<b>Velocità Nominale</b> Rated Speed	88.6/106.3rpm
<b>Sistema di funzionamento</b> Working system	S3 50%
<b>Grado IP</b> IP Grade	IP41
<b>Rumorosità</b> Noise	< 38dB
<b>Dimensioni</b> Size	50X60X260mm
<b>Codice Prodotto</b> Product Code	10000004   M100-220V
<b>Funzioni</b> Function	AC Switch Control



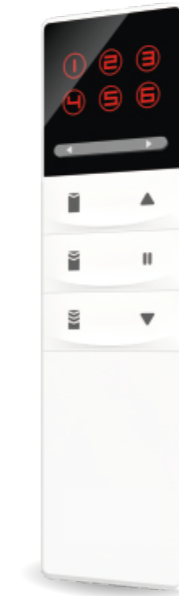
E025382 TRACK	CURVATURE RADIUS	4m	6m	8m	10m
	—	50kg	40kg	30kg	25kg
	R400	40kg	30kg	20kg	—
	R400	25kg	20kg	—	—

# CONTROL SYSTEM

ELECTRIC CURTAIN SYSTEM | WIRELESS REMOTE CONTROL



## HOLDER



<b>Codice Prodotto</b> Product Code	E10300180	E10300195	E10300192
<b>Canali Telecomando</b> Receive Channel	2CH	6CH	20CH
<b>Batteria</b> Battery		CR2032 x 1pc	
<b>Frequenza Telecomando</b> Receive Frequency		433.92MHz±75KHz (ASK)	
<b>Portata Telecomando</b> Transmit Distance		≤30m (Indoor)	
<b>Dimensioni</b> Size		141x41x13mm	